



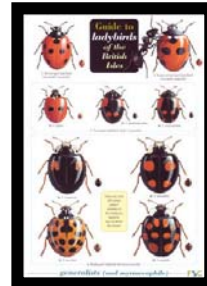
Anglian Lepidopterist Supplies

Specialising in
moth traps and
related equipment

GT07 – Ladybird Set

Ladybirds are natural garden predators, reducing chemical use in the garden! They eat aphids, scale insects, mealy bugs and spider mites and can be encouraged into your garden using this ALS Gift Set.

- Ladybird Tower
- Ladybird Food & Attractant
- FSC Ladybird Guide



A natural habitat for ladybirds and other beneficial insects. The Ladybird Tower has a central chamber filled with natural material. There are many holes drilled at an upward angle for the insects to reach the insulated and safe inner chamber. If necessary a roof panel may be removed for inspection or cleaning.

SITING - There is a ground pole provided so the tower is easy to site into lawns, sheltered flower beds, wooded glades or even in planters. Site out of prevailing winds in a warm spot.

MAINTENANCE - The roof and base are Oak, Larch or similar durable timber so no preservatives should be used as it may be harmful to the ladybirds.

DIMENSIONS - 285x140x100 - 0.84KG.

Set up time for food: From early Spring onward, Preparation Food will last up to four months. 5 gram sachet